

# LIBERTY

## Lighting Control Desk



### “....IT’S ONLY THE START OF A REVOLUTION”

First member of a forthcoming family based on HATHOR, a very powerful, state of the art lighting and show control software, LIBERTY is the spot-on solution for space-challenging environments and all venues seeking a fully integrated solution to control conventional and moving lights as well as LED sources and other modern equipment in a compact and portable package with the capacity of much larger and more expensive lighting consoles.

Highly intuitive thanks to the graphical user interface this desk meets the sophisticated needs of all lighting professionals alike. As an operator it is easy to advance from a LIBERTY console to other members of the HATHOR software powered lighting control desk family.

The HATHOR software itself has been developed with the requirements of modern lighting design trends and over an extended period of time meticulously and profoundly tested. The lighting control desk philosophy has been specifically designed for theatre stage lighting without any compromise.

The heart of the unit is driven by a powerful processor with multiple graphical screens and running under the newest embedded version of Windows OS. This design offers unrivalled performance and reliability, as well as the flexibility to incorporate the software drivers for the latest peripheral devices. The lighting console exchanges among other protocols with standard ASCII show files. The operator may freely configure the screen layout and tailor the user interface to their personal needs and preferences.

LIBERTY is available in five basic configurations controlling channel numbering from 120 to 1024 multi-parameter lighting instruments and can address up to 16 universes via suitable networks. Synchronised passive backup feature is integrated in the system. LIBERTY consoles perform as standalone or as a backup/client desks in an extended network system. Networked LIBERTY consoles will support multi-user / multi-operator setups with optional software packages and hence works perfectly together with other control desks with HATHOR based software.

# LIBERTY

## Software Features

### Control Channels

120/240/360/512/1024 multi-parameter lighting instruments, LED fixtures, Moving Lights, Video Servers, Smoke Machines etc... (Retrofit upgrade of channel count possible by optional upgrade kits).

### Available Control Protocols

ArtNET, Sandnet, Pathport, sACN, and many others.

- RDM ready
- ACN E1.31 ready

### Operational Features

- RPN (Reverse Polish Notation) and "AT"-Mode style user input selectable.
- Graphical User interface with 2D views (Channel's layouts) which let the operator working directly on the light plot, with selection options (full mouse support, with extensive and intuitive use of drag'n drop and local menus).
- Track Window allows editing of cues via Editor for Instrument parameters and intensities. Times and values can be edited, by numeric entry or by using Palette menus. Tracking of all referenced objects such as Presets, Palettes, Groups, color frames and recorded Fader movements over the whole show.
- Instrument Window :
  - o Channels as Instruments, combining one or several types of devices such as dimmers, color changers, yokes and moving lights into one single Instrument.
  - o Graphical device and dimmer patch with user definable curves.
  - o Channel and Dimmer Live Test.
- Cues organization by Free Sequence using Presets as reference, or Cue List.
- Drag'n drop facilities to copy/paste or move steps (cues) in the sequence.
- Each step (cue) can be edited Live or Blind, channel by channel and parameter by parameter for values and crossfade times.
- Attribute recordings as independent objects in the sequence.
- Time line representation and editing of timed transitions.
- Submasters
  - o Rubberband functionality and Auto-execute look functionality for parameter control through faders.
  - o Fader content and movement can be recorded in the sequence.
- 7 basic Palette Attributes Group as : Focus, Color, Beam, Pattern, Extra, All, Dynamics.
- Additional Sub Palettes or user defined Attribute groups possible: e.g.: Shutters, Controls, Speeds, Video tools, etc.
- Reference Palettes and No reference Palettes.
- Recording possibilities : Direct or Drag'n drop / Filters.
- Palettes fully editable.

- Tracking mode or non-tracking mode for intensity in a Cue Sequence, defined by user.  
Tracking mode for fixture's parameters with history background, editing and clean-up functions.
- Extensive Factory Template Library as well as user definable templates with 16 bit resolution for any parameter and intensities.  
Complete Template builder included, with direct access and live template modifications and check.
- Park Function.
- Undo Function.
- Highlight Function
  - Open all Gobos / Colours – for focus of single instrument.
- Copy Attributes command to copy parameter's data from one luminaire to others of the same type.
- Fetch Position command to copy parameter's data from one cue in the list to stage for a selection of devices.
- Fetch command to copy intensity's data from one cue in the list to stage for a selection of channels.
- Clone function to copy all parameter's data from one luminaire (source) to others of the same type for all cues in the play.
- Replace Fixture function to exchange one device for another one of different type.
- Play (show) browser allowing offline browsing and editing of shows not currently loaded.

### Colour Scroller Tools

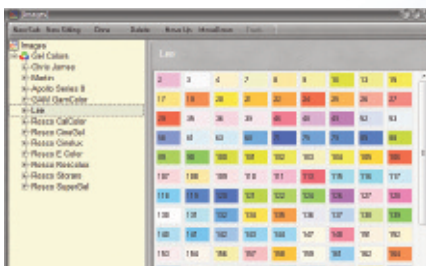
- Gel strings builder with colour filters images and manufacturer references.
- Individual frame calibration.
- Gel strings are objects you can copy, paste, move, import and export.
- Live gel string modification and check.
- Extensive gel library for onscreen display of color frame for color changers.
- Direct display of the colour frame in the channel box.
- Direct access with frame button or gel picker.

### Devices Tools

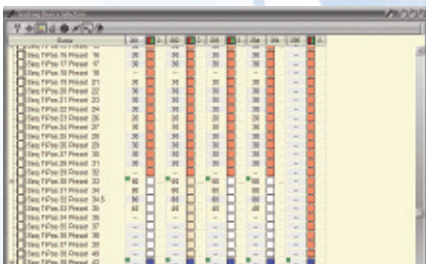
- Color Picker / Gobo Picker.
- Beam tools.
- Parameter entries in % or in degrees.
- Pan invert /Tilt invert functions on input (without any consequences on show's data).
- Attributes are executed as "Move while Dark" as default by preference.
- The chosen behavior can be always overridden at any level while recording or editing.



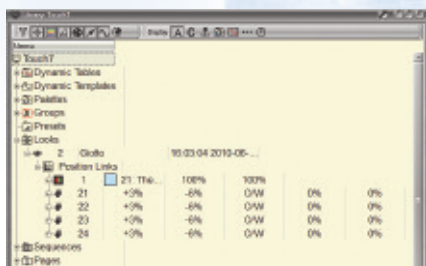
Touchscreen Topographic Layout



GEL Library



Memories edition's window



Editor of shows

### Screens Layouts

- At initial system start a default screen layout organization is present. This default layout can be re-loaded at any time.
- Infinite possibilities to organize screens.
- Four sub-screens per monitor.
- Multiple windows per sub-screen.
- STORE and LOAD functions (User Layouts).
- Individual dynamic zoom of all editors and browsers.

### Intuitive and Contextual Functions

- Objects such as Channels, Palettes, and Presets can be dragged and dropped from one place to another, generating very intuitive pop-up menus. Objects such as Channels, Palettes and Presets can be selected and activated directly by finger tap.

### Playbacks

- 1 Grandmaster 60 mm with Blackout key.
- 24 physical Submasters 60 mm with assign key and Flash key. Modes: Solo / Inhibit / Focusing / Rubberband & Auto-execute look.
- Loading possibilities: Channels, Groups, Presets, Looks, Chasers, Attributes and Palettes.
- 1 Master Playback 100 mm (Sequential Theatrical Crossfade) GO / GO BACK / PAUSE / Jump / SEQ- & SEQ + keys
- 1 Intensity / Speed control wheel

### Keypad

- Status information LCD.
- Channel selection: +, -, Thru, +%, -%, At Level, All and Invert commands.
- RECORD/UPDATE for Presets, Looks, Groups, Palettes with filtered options.
- Direct Frame (Gel String Color) key.
- Direct Numeric entry for SEQUENCE Times and Special Times.
- Undo key.

### Integrated 10.1" LED Touchscreen

5 Dedicated keys for very quick related content display:

- SEQUENCE
- SUBMASTERS
- CHANNELS
- MOVING LIGHTS CONTROL
- USER SCREEN

### Power Requirements

Power supply cable: CEE22 connector

Power supply: 50/60 Hz, 100 - 240 V, 7 A - 3,5 A

### Connections

2 DMX512 XLR 5 pins female.

1 ETHERNET RJ45.

1 D-Sub connector – 8 external lines for remote triggering.

6 USB PORTS.

1 USB located on front panel.

1 AUDIO In XLR 3 pins female.

1 DVI video connector.

1 VGA video connector.

1 Desk lamp supply XLR 3 pins female: 12 V – 400 mA – 5 W.

1 PS2.

1 S.A.T.A. port.

### Physical Specifications

Dimensions: 750 × 481 × 202 mm

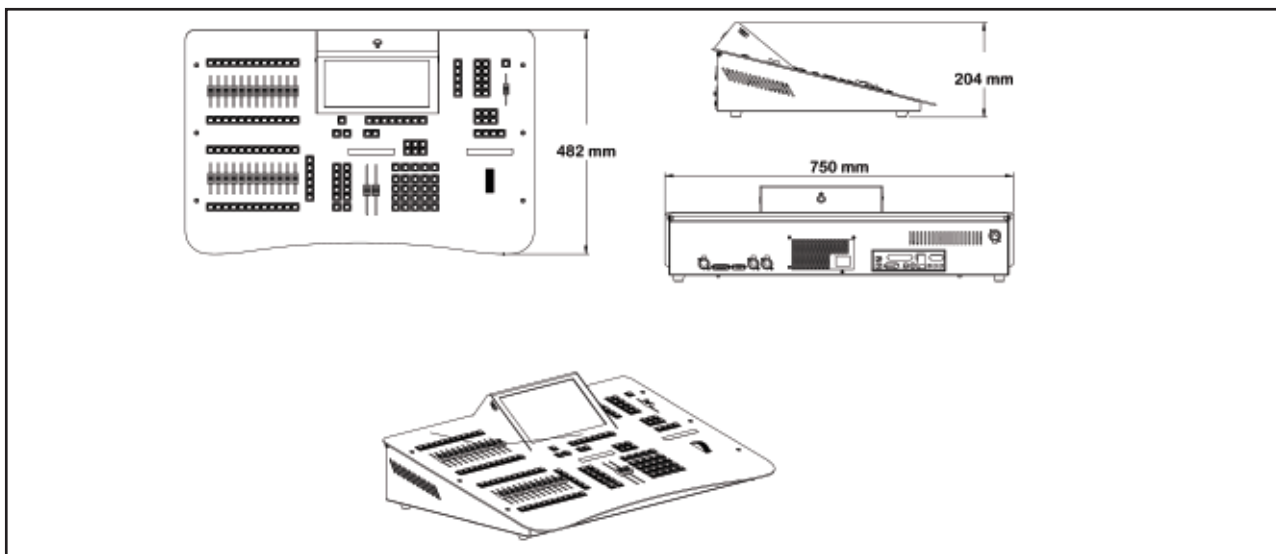
Weight Console: 15 kg

Operating temperature range: from + 5 °C to + 35 °C.

Humidity: relative humidity not more than 95% non-condensing.

# LIBERTY

## Ordering Information



Description	References
<b>LIBERTY - 120 channels</b> <b>LIBERTY - 240 channels</b> <b>LIBERTY - 360 channels</b> <b>LIBERTY - 512 channels</b> <b>LIBERTY - 1024 channels</b>	LIBERTY/120 LIBERTY/240 LIBERTY/360 LIBERTY/512 LIBERTY/1024
Supplied with: alphanumerical keyboard and mouse, supply cable, dust cover and Quick Start user manual and system restore DVD.	
<b>Hardware Options and Accessories</b> For Channel upgrades and Networking options please contact your ADB distribution Partner DVD Player / Writer with USB connection MIDI – USB adaptor 22" LCD/TFT monitor 22" LCD/TFT monitor with Multi Touch Integrated XLR3 "gooseneck" desk lamp MIDI cable USB memory stick Flight case for LIBERTY consoles Flight case for 22" Touchscreen Monitor	DVD MIDI/USB LCD22 LCD22/H WORKLITE/XLR3 C.MIDI/M FLASHMEM FLY/L FLY/M/L

### ADB - Your Partner for Light

<b>Belgium</b>	<b>N.V. ADB-TTV Technologies S.A.</b> (Group Headquarters) Leuvensesteenweg 585, B-1930 Zaventem Tel : 32.2.709.32.11, Fax : 32.2.709.32.80, E-Mail : adb@adblighting.com
<b>Deutschland</b>	<b>ADB GmbH</b> Boschstrasse 3, D-61239 Ober-Mörlen Tel : 49.6002.93.933.0, Fax : 49.6002.93.933.33, E-Mail : info@adblighting.de
<b>France</b>	<b>ADB S.A.S.</b> <b>Sales Office:</b> 168/170, boulevard Camélinat F-92240 Malakoff Tel : 33.1.41.17.48.50, Fax : 33.1.42.53.54.76, E-Mail : adb.fr@adblighting.com <b>Factory &amp; Group Logistics Centre:</b> Zone industrielle Rouvroy F-02100 Saint-Quentin Tel : 33.3.23.06.35.70, Fax : 33.3.23.67.66.56, E-Mail : adb.fr@adblighting.com
<b>Hong Kong</b>	<b>ADB Lighting Asia Ltd</b> Suite 2414, Level 24, Two Pacific Place, 88 Queensway Tel : +852 903 232 27, E-mail : adb@adblighting.com