

The “AC” Range

625 W / 1000 W / 1250 W Cyclorama Lights

The “AC” range of cyclorama lights features a unique combination of an asymmetrical reflector and 2, highly reflective side mirrors to provide high quality lighting for both studio and stage applications.

These fixtures are ideal for creating an homogenous light level or for stage set lighting, e.g.

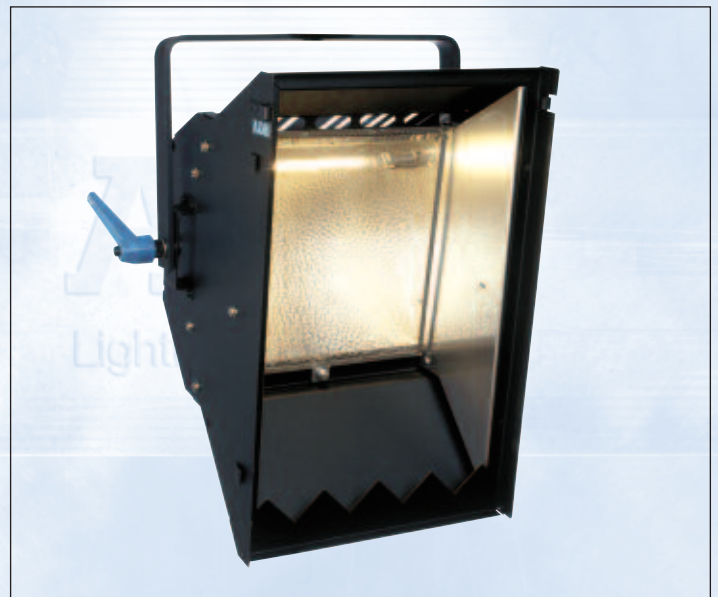
- vertical, even illumination of cyclorama or horizon screen
- diffused back lighting
- asymmetrical soft light

These compact and lightweight luminaires are designed for use with 625 W, 1000 W or 1250 W clear or frosted halogen lamps, and either gel or glass colour filters.

Excellent ventilation by natural convection ensures long life of lamps and filters.

Flexibility is provided by a large choice of single, double, triple or quadruple units assembled in either horizontal, vertical or square formats.

Each combination can be supplied for manual or pole operation.



ACV - ACP 1000

Specifications

Housing

- Housing made of welded steel sheets.
- High temperature resistant, electrostatically deposited matt black painting.
- Ventilation / heat sinks designed to avoid light spill.
- No noise during heating and cooling phases.

Filter Frame Cassette

- Front cassette with runners for insertion of a filter frame on the ACV units. The filter frame for the ACP versions is integrated.

Clamping

- A strong steel yoke with effective clamping mechanism provides considerable resistance to unwanted movement and vibration. The luminaire can rotate all around its axis.

Pole Operation

- Built to EN 60598 2-17 standards.
- Smooth control without shocks or vibrations.
- Not sensitive to heat and tilt angle.
- DIN spigot included.

Optical System

- Asymmetrical reflector and side mirrors of pure, anodised aluminium.

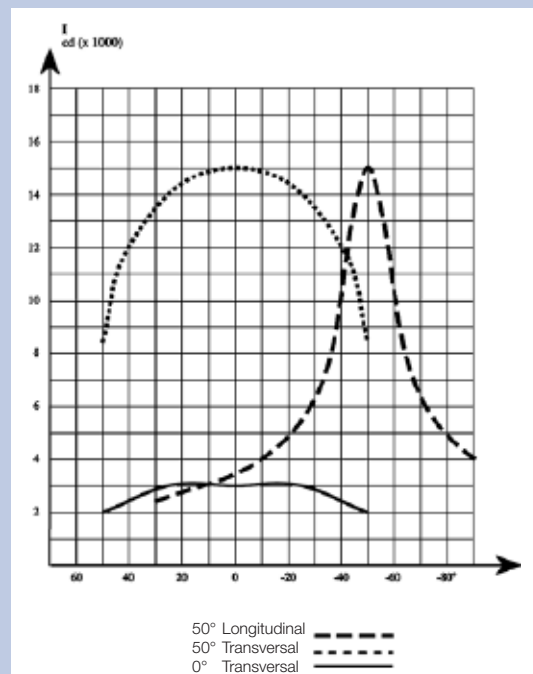
Electromechanical Parts

- R7S lampholders for 230 V / 625 W, 1000 W or 1250 W tubular halogen lamps.
- 2 m silicon power cable (2 x 1.5 + 1.5 mm²) without plug.

Safety / Reliability

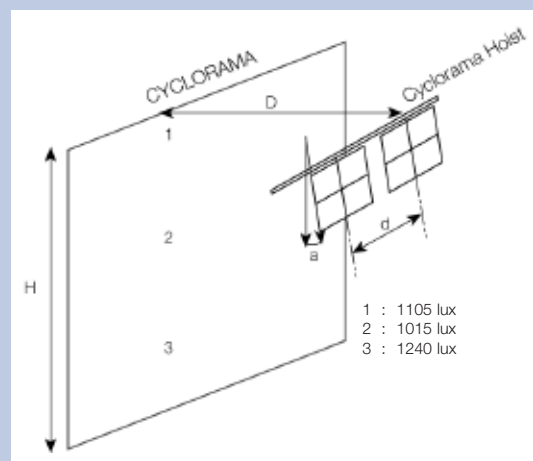
- These equipments comply with all applicable European directives and carry a CE mark.
- Safety screws prevent accidental drop-out of accessories.
- Heat insulated handle.
- All metal components are protected against corrosion.

Photometric Data



An average level of 1000 lux will be achieved on a cyclorama 6.2 m high, from a distance of 2.5 m using AC units with glass filters, 1250 W - 3200°K - 230 V lamp, with 2.6 m distance between units.

An average level of 1000 lux will be achieved on a cyclorama 5.6 m high, from a distance of 2.5 m using AC units with glass filters, 1250 W - 3200°K - 230 V lamp, with 1.6 m distance between units.



ACV 1004 with safety grid and 1250 W lamp
H : Height of cyclorama : 7.5 m
D : Distance from light source to cyclorama : 4 m
d : Distance between luminaires : 1 m
a : Tilt angle : 15°

ACV - ACP 1000

625 W / 1000 W / 1250 W



ACV 1000

Cyclorama light with asymmetrical reflector for use with **glass filter**

Supplied with :

- R7S lampholder
- 3 mm safety grid
- 2 m silicone power supply cable (2 x 1.5 + 1.5 mm²) without plug









ACP 1000

Cyclorama light with asymmetrical reflector for use with **gel filter**

Supplied with :

- R7S Lampholder
- 3 mm safety grid
- Integrated filter frame
- 2 m silicone power supply cable (2 x 1.5 + 1.5 mm²) without plug

ACV / ACP 1000 Cyclorama Lights (A x B x C)	Manual Operation		Pole Operation	
	Glass Filters	Gel Filters	Glass Filters	Gel Filters
 Single unit	ACV 1001 390 x 330 x 120 mm 3 kg	ACP 1001 390 x 450 x 230 mm 5 kg	ACV 1001 P 395 x 330 x 120 mm 3.5 kg	ACP 1001 P 395 x 450 x 230 mm 6 kg
 Horizontal double unit	ACV 1002 H 730 x 330 x 120 mm 7 kg	ACP 1002 H 730 x 450 x 230 mm 11.5 kg	ACV 1002 H P 735 x 330 x 120 mm 7.5 kg	ACP 1002 H P 735 x 450 x 230 mm 12.5 kg
 Vertical double unit	ACV 1002 V 450 x 680 x 120 mm 7.5 kg	ACP 1002 V 450 x 1010 x 230 mm 13 kg	ACV 1002 V P 455 x 680 x 120 mm 8 kg	ACP 1002 V P 455 x 1010 x 230 mm 14 kg
 Horizontal triple unit	ACV 1003 H 1015 x 330 x 120 mm 11 kg	ACP 1003 H 1015 x 450 x 230 mm 17.5 kg	ACV 1003 H P 1020 x 330 x 120 mm 12 kg	ACP 1003 H P 1020 x 450 x 230 mm 19 kg
 Horizontal quadruple unit	ACV 1004 H 1310 x 330 x 120 mm 14 kg	ACP 1004 H 1310 x 450 x 230 mm 23 kg	ACV 1004 H P 1315 x 330 x 120 mm 15.5 kg	ACP 1004 H P 1315 x 450 x 230 mm 25 kg
 Square quadruple unit	ACV 1004 C 730 x 680 x 120 mm 14.5 kg	ACP 1004 C 730 x 1010 x 230 mm 25 kg	ACV 1004 C P 735 x 680 x 120 mm 16 kg	ACP 1004 C P 735 x 1010 x 230 mm 27 kg

The "AC" Range

625 W / 1000 W / 1250 W Cyclorama Lights

Accessories	ACV 1000	ACP 1000	Reference
Set of 4 filter frames with 12 mm safety grid	•		CAD/PF/ACV
Compact gel filter adapter cassette	•		ACVP
Transparent safety glass 257 x 257 mm	•		VS/CAD/ACV
Vertical barndoors (set of 2 pieces, 1 right & 1 left)	•		CFV/ACV
Horizontal barndoor (one bottom part)	•		CFH/ACV
Vertical barndoors (set of 2 pieces, 1 right & 1 left)		•	CFV/ACP
Horizontal barndoor (one bottom part)		•	CFH/ACP
Hook clamp for Ø 21 to Ø 48 mm tubes	•	•	A6
Hook clamp for Ø 35 to Ø 50 mm tubes	•	•	A20
Hook clamp for Ø 35 to Ø 50 mm tubes	•	•	A25
Hook clamp for Ø 45 to Ø 60 mm tubes	•	•	A30
1.2 m safety cable	•	•	CAS 120/N
Glass Filter (257 x 257 mm) light blue	•		FV41/ACV
Glass Filter (257 x 257 mm) primary blue	•		FV19/ACV
Glass Filter (257 x 257 mm) yellow	•		FV4/ACV
Glass Filter (257 x 257 mm) primary red	•		FV6/ACV
Glass Filter (257 x 257 mm) dark green	•		FV124/ACV

Spare Parts			Reference
3 mm Safety grid	•		GR3/ACV
3 mm Safety grid		•	GR3/ACP
R7S lampholder	•	•	R7S

ADB - Your Partner for Light

Belgium	N.V. ADB-TTV Technologies S.A. (Group Headquarters) Leuvensesteenweg 585, B-1930 Zaventem Tel : 32.2.709.32.11, Fax : 32.2.709.32.80, E-Mail : adb@adblighting.com
Deutschland	ADB GmbH Boschstrasse 3, D-61239 Ober-Mörlen Tel : 49.6002.93.933.0, Fax : 49.6002.93.933.33, E-Mail : info@adblighting.de
France	ADB S.A.S. Sales Office: 168/170, boulevard Camélinat F-92240 Malakoff Tel : 33.1.41.17.48.50, Fax : 33.1.42.53.54.76, E-Mail : adb.fr@adblighting.com Factory & Group Logistics Centre: Zone industrielle Rouvroy F-02100 Saint-Quentin Tel : 33.3.23.06.35.70, Fax : 33.3.23.67.66.56, E-Mail : adb.fr@adblighting.com

ADB
Lighting Technologies

DS-7023-E-09j Subject to modifications